

High Back cantilever base chair with and without armrests

Seat / back: fire-retardant moulded polyurethane foam according to California Bulletin 117-2013, EN 1021-1 / 2:

2014 and Italian Class 1 IM Standards.

Frame: steel tube Ø 25 mm available in powder coated or chromed finish.

Armrest in die-cast aluminum:

with steel tube frame Ø 16 mm available in powder coated or chromed finish.

Upholstered armrests: fire-

retardant moulded polyurethane foam.

Covers: fabric, faux-leather or C.O.M. preferably in solid colours.

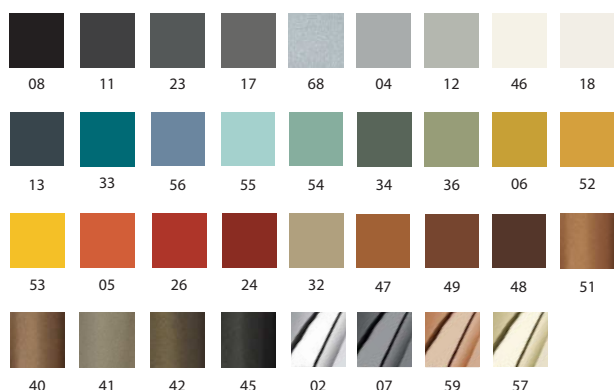
Glides: thermoplastic material.



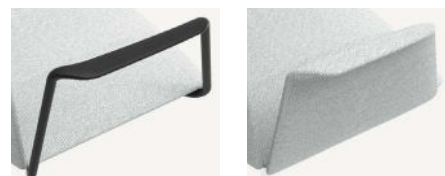
| | Article | Finish | Powder coated frame | Chromed frame | Galvanic frame 07, 59, 57 | Pcs / dimensions volume / gross weight product net weight |
|---------------------------------|---------|--|---------------------|---------------|---------------------------|---|
| Chair | S0208 | Gazebo Xtreme Plus / Magnum / Rivet / Main Line Flax Blazer / Gingko / Step Melange / Silvertex / Remix3 Steelcut Trio3 / Atlas / Canvas2 Leather C.O. faux leather / C.O.M. (solid colour) | | | | 1 pz / 57X57X99 cm 0,32 m3 / 12,6 Kg 9,6 Kg |
| Chair with aluminium armrests | S0209 | Gazebo Xtreme Plus / Magnum / Rivet / Main Line Flax Blazer / Gingko / Step Melange / Silvertex / Remix3 Steelcut Trio3 / Atlas / Canvas2 Leather C.O. faux leather / C.O.M. (solid colour) | | | | 1 pz / 68X57X99 cm 0,38 m3 / 15,3 Kg 12,3 Kg |
| Chair with upholstered armrests | S0210 | Gazebo Xtreme Plus / Magnum / Rivet / Main Line Flax Blazer / Gingko / Step Melange / Silvertex / Remix3 Steelcut Trio3 / Atlas / Canvas2 Leather C.O. faux leather / C.O.M. (solid colour) | | | | 1 pz / 68X57X99 cm 0,38 m3 / 19,0 Kg 16,5 Kg |

Finishes

Metal frame



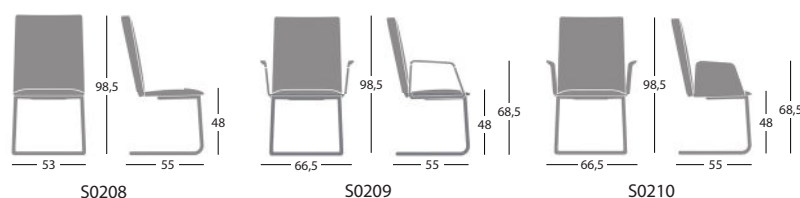
Armrests



Aluminium armrest

Upholstered armrest

Dimensions



Fire retardant certifications

The product upholstered with Silvertex faux-leather meets Class 1IM Standards by the Italian Minister of Interior.

Customer's own material

For customer's own material the form at the end of the price list shall apply, to be sent to Segis Spa with the Client's signature.

Solid fabric:
Art. S0208 /S0209
for 1 pc. 130 cm (H. 140 cm) + 130 cm for material approval
Art. S0210
for 1 pc. 140 cm (H. 140 cm) + 140 cm for material approval