

High back conference chair
 Five star swivel base with and without armrests
 Gas operated adjustable seat height.
 Seat / back: fire-retardant moulded polyurethane foam according to California Bulletin 117A-2013, EN 1021-1 / 2: 2014 and Italian Class 1 IM Standards.
 Swivel base: in die-cast aluminum available in powder coated or polished brushed finish.
 Column: chromed finish

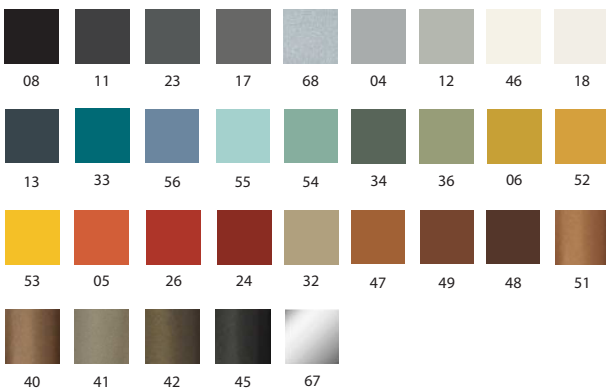
Armrests in die-cast aluminum: with steel tube structure Ø 16 mm available in powder coated or chromed finish.
 Upholstered armrests: fire-retardant moulded polyurethane foam.
 Covers: fabric, faux-leather or C.O.M. preferably in solid colours.
 Castors: self-braking castors.



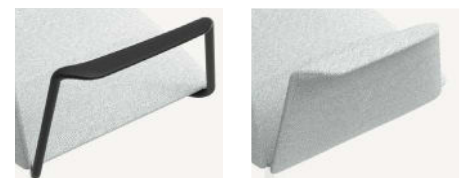
	Article	Finish	Powder coated base	Polished brushed (67) base	Polished brushed (67) base with chromed armrests	Pcs / dimensions volume / gross weight product net weight
Chair	R0139	Gazebo Xtreme Plus / Magnum / Rivet / Main Line Flax Blazer / Gingko / Step Melange / Silvertex / Remix3 Steelcut Trio3 / Atlas / Canvas2 Leather C.O. faux leather / C.O.M. (solid colour)				1 pz / 72X72X99 cm 0,52 m ³ / 12,0 Kg 9,5 Kg
Chair with aluminium armrests	R0140	Gazebo Xtreme Plus / Magnum / Rivet / Main Line Flax Blazer / Gingko / Step Melange / Silvertex / Remix3 Steelcut Trio3 / Atlas / Canvas2 Leather C.O. faux leather / C.O.M. (solid colour)				1 pz / 72X72X99 cm 0,52 m ³ / 13,5 Kg 11,0 Kg
Chair with upholstered armrests	R0141	Gazebo Xtreme Plus / Magnum / Rivet / Main Line Flax Blazer / Gingko / Step Melange / Silvertex / Remix3 Steelcut Trio3 / Atlas / Canvas2 Leather C.O. faux leather / C.O.M. (solid colour)				1 pz / 72X72X99 cm 0,52 m ³ / 18,0 Kg 15,5 Kg

Finishes

Metal frame



Armrests



Aluminium armrest

Upholstered armrest

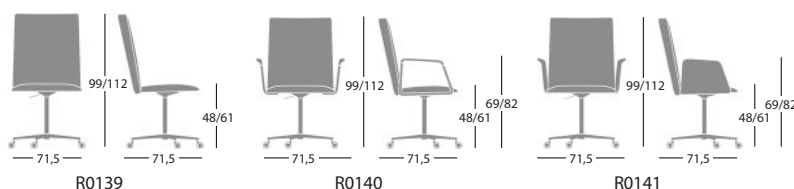
Accessories

Tilt mechanism with tilt lock.

Fire retardant certifications

The product upholstered with Silvertex faux-leather meets Class 1IM Standards by the Italian Minister of Interior.

Dimensions



Customer's own material

For customer's own material the form at the end of the price list shall apply, to be sent to Segis Spa with the Client's signature.

Solid fabric:
 Art. R0139 / R0140
 for 1 pc. 130 cm (H. 140 cm) + 130 cm for material approval
 Art. R0141
 for 1 pc 140 cm (H. 140 cm) + 140 cm for material approval