

## DERBY

Archirivolto Design / 2014



Armchair, four leg spider swivel base  
Shell: integral polyurethane foam with inner steel frame. Surface finish lightly textured with the external back displaying a raised pattern.

The shell, in fire retardant material meeting EN 1021-1/2:2014 and Class 1 Standards, is offered in monochromatic or bicoloured finish.

Upholstered version: Shell with inner steel frame and cold-injected polyurethane foam.

Fire retardant foam meets EN 1021-1/2:2014 and Class 1IM Standards. (preferably in solid colours)

Special foam meeting the 5852 British Standards is available on request.

Covers in fabric, faux-leather or COM

Frame: steel in powder coated or chromed finish.

Glides: thermoplastic material



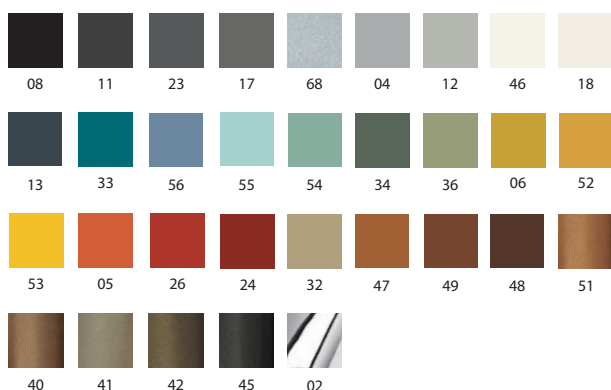
## Awards:

2016: USA Winner of 2016 Adex Award for Design Excellence - Platinum Award

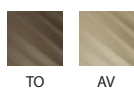
	Article	Finish	Powder coated frame	Chromed frame	pcs / dimensions volume / gross weight product net weight
Armchair	S0093	Integral polyurethane			1 pc / 65,5x63,5x83,5 cm 0,35m <sup>3</sup> / 15 Kg 11 Kg
Armchair	I0033	Gazebo Xtreme Plus / Magnum / Rivet / Main Line Flax Blazer / Gingko / Step Melange / Silvertex / Remix3 Steelcut Trio3 / Atlas / Canvas2 C.O. faux leather / C.O.M. (solid colour)			1 pc / 65,5x63x83,5 cm 0,35m <sup>3</sup> / 15,90Kg 12,40Kg

## Finishes

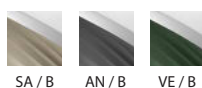
## Frame



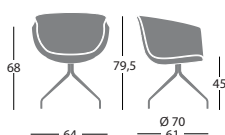
## Polyurethane-Monochromatic finish



## Polyurethane-Bicoloured finish



## Dimensions



## Additional costs

Black nickel 07 finish for Art. I0033

## Customer's own material

For customer's own material, the form at the end of the price list shall apply, to be sent to Segis Spa with the Client's signature.

Solid fabric:  
for 1 pc shell 180 cm (H. 140 cm) + 180 cm for material approval