

DERBY

Archirivolto Design / 2014



Armchair, four star swivel base
Shell: integral polyurethane foam with inner steel frame. Surface finish lightly textured with the external back displaying a raised pattern.
 The shell, in **fire retardant material meeting EN 1021-1/2:2014 and Class 1 Standards**, is offered in monochromatic or bicoloured finish.
Upholstered version: Shell with inner steel frame and cold-injected polyurethane foam.
Fire retardant foam meets EN 1021-1/2:2014 and Class 1IM Standards.
 (preferably in solid colours)

Special foam meeting the **5852 British Standards** is available on request.
Covers in fabric, faux-leather or COM
Five star swivel base
Frame: die-cast aluminium in powder coated or brushed finish. Adjustable seat height with gas lift.
Column: chromed finish
 Self-braking castors

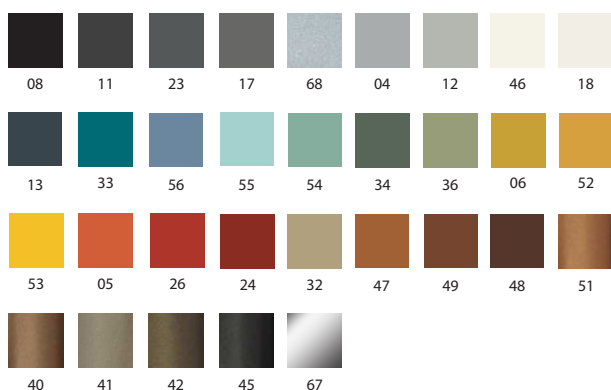


Awards:
 2016: USA Winner of 2016 Adex Award for Design Excellence - Platinum Award

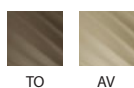
	Article	Finish	Powder coated frame	Polished and brushed frame 67	pcs / dimensions volume / gross weight product net weight
Armchair	RS0037	Integral polyurethane			1 pc / 65,5x63,5x83,5 cm 0,35m ³ / 14,3 Kg 10,9 Kg
Armchair	RI0037	Gazebo Xtreme Plus / Magnum / Rivet / Main Line Flax Blazer / Gingko / Step Melange / Silvertex / Remix3 Steelcut Trio3 / Atlas / Canvas2 C.O. faux leather / C.O.M. (solid colour)			1 pc / 65,5x63x83,5 cm 0,35m ³ / 15,20 Kg 11,80 Kg

Finishes

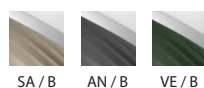
Frame



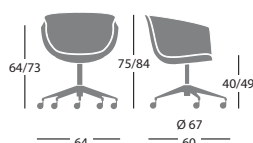
Polyurethane-Monochromatic finish



Polyurethane-Bicoloured finish



Dimensions



Customer's own material

For customer's own material, the form at the end of the price list shall apply, to be sent to Segis Spa with the Client's signature.

Solid fabric:
 for 1 pc shell 180 cm (H. 140 cm) + 180 cm for material approval