

## Armchair / Sofa

Internal metal frame and cold-injection polyurethane foam.

Fire retardant foam meets California Bulletin 117A, EN1021-1/2:2014 and Italian Class 1 IM Standards.

Special foam meeting the 5852 British Standards is available on request.

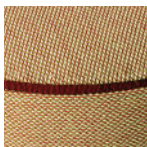
Legs in solid wood.

Covers: fabric, faux-leather, leather or C.O. M. (preferably in solid colours) with heavy duty Gros Grain welting

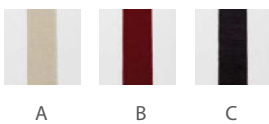


	Article	Upholstery	Beech wood legs	pcs / dimensions volume / gross weight product net weight
Armchair Wood legs	I210	Gazebo Xtreme Plus / Magnum / Rivet / Main Line Flax Blazer / Gingko / Step Melange / Silvertex / Remix3 Steelcut Trio3 / Atlas / Canvas2 Leather C.O.L. C.O. faux leather / C.O.M. (solid colour)		1 pc / 74x74x56 cm 0,31 m3 / 21 Kg 18,6 Kg
Sofa Wood legs	I211	Gazebo Xtreme Plus / Magnum / Rivet / Main Line Flax Blazer / Gingko / Step Melange / Silvertex / Remix3 Steelcut Trio3 / Atlas / Canvas2 Leather C.O.L. C.O. faux leather / C.O.M. (solid colour)		1 pc / 139x74x57 cm 0,59 m3 / 39 Kg 32,3 Kg

3 LOUNGE SEATING



## Gros Grain colours

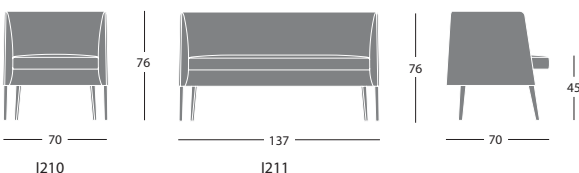


## Finishes

### Wood legs



## Dimensions



## Additional costs

Legs in Oak wood



Upholstery in two different materials  
or two colours of the same material

## Customer's own material

For customer's own material/leather, the form at the end of the price list shall apply, to be sent to Segis Spa with the Client's signature.

Art. I210 Solid fabric: for 1 pc 290 cm (H.140 cm)

C.O.L. qty: for 1 pc 4,20m<sup>2</sup>

Upholstery in two colours for 1 pc (H.140 cm): seat 80 cm / shell 210 cm

Art. I211 Solid fabric: for 1 pc 410 cm (H.140 cm)

C.O.L. qty: for 1 pc 6,20 m<sup>2</sup>

Upholstery in two colours for 1 pc (H.140 cm): seat 130 cm / shell 280 cm